



Botany Garden species checklist*

*From season to season species may be added or removed from the garden.

Woody Perennials

Common name	Latin Name	Family	Origin
Glossy Abelia	<i>Abelia x grandiflora</i>	<i>Caprifoliaceae</i>	Hybrid Origin (A. chinensis X A. uniflora)
White Forsythia	<i>Abeliophyllum distichum</i>	<i>Oleaceae</i>	Korea
White Fir	<i>Abies concolor</i>	<i>Pinaceae</i>	Western North America
Chinese Lantern	<i>Abutilon x hybridum</i>	<i>Malvaceae</i>	Hybrid Origin
Bloodgood Japanese Maple	<i>Acer palmatum 'Bloodgood'</i>	<i>Sapindaceae</i>	Japan, Korea
Red Maple	<i>Acer rubrum 'Autumn Spire'</i>	<i>Sapindaceae</i>	Eastern & central North America
Red Buckeye	<i>Aesculus pavia</i>	<i>Sapindaceae</i>	Southeastern United States
Chocolate Vine INVASIVE	<i>Akebia quinata</i>	<i>Lardizabalaceae</i>	Japan, China, Korea
Regent Saskatoon	<i>Amelanchier alnifolia 'Regent'</i>	<i>Rosaceae</i>	Northwestern North America
Apple Serviceberry	<i>Amelanchier x grandiflora 'Autumn Brilliance'</i>	<i>Rosaceae</i>	Hybrid/Cultivar
Lead Plant	<i>Amorpha canescens</i>	<i>Fabaceae</i>	Central North America
Duchman's-Pipe	<i>Aristolochia durior</i>	<i>Aristolochiaceae</i>	Eastern North America
Chokeberry	<i>Aronia melanocarpa</i>	<i>Rosaceae</i>	Eastern United States
Red Barberry	<i>Berberis thunbergii var. atropurpurea</i>	<i>Berberidaceae</i>	Japan
Korean Boxwood	<i>Buxus sinica var. insularis "Wintergreen"</i>	<i>Buxaceae</i>	Japan and Taiwan
Purple Pride Beautyberry	<i>Callicarpa dichotoma 'Purple Pride'</i>	<i>Lamiaceae</i>	Eastern Asia
Carolina Allspice	<i>Calycanthus floridus</i>	<i>Calycanthaceae</i>	Southeastern United States
European Hornbeam	<i>Carpinus betulus 'Fastigiata'</i>	<i>Betulaceae</i>	Europe to Iran
Bluebeard	<i>Caryopteris x clandonensis</i>	<i>Lamiaceae</i>	Hybrid Origin
New Jersey Tea	<i>Ceanothus americanus</i>	<i>Rhamnaceae</i>	Eastern North America
Common Hackberry	<i>Celtis occidentalis</i>	<i>Cannabaceae</i>	Eastern United States

Woody Perennials

Common name	Latin Name	Family	Origin
Buttonbush	<i>Cephalanthus occidentalis</i> 'Keystone'	Rubiaceae	Eastern North America
Katsura Tree	<i>Cercidiphyllum japonicum</i>	Cercidiphyllaceae	Japan and China
Eastern Redbud	<i>Cercis canadensis</i>	Fabaceae	Eastern North America
White Fringetree	<i>Chionanthus virginicus</i>	Oleaceae	Eastern United States
Sweet Pepperbush	<i>Clethra alnifolia</i>	Clethraceae	Eastern North America
Pagoda Dogwood	<i>Cornus alternifolia</i>	Cornaceae	Eastern North America
Persimmon	<i>Diospyros virginiana</i>	Ebenaceae	Eastern United States
European Beech	<i>Fagus sylvatica</i>	Fagaceae	Central and southern Europe
Weeping Fig	<i>Ficus benjamina</i>	Moraceae	Southeast Asia
Fig	<i>Ficus carica</i>	Moraceae	Mediterranean regions
Mistletoe Fig	<i>Ficus deltoidea</i>	Moraceae	Malay Archipelago
Rubber Tree	<i>Ficus elastica</i>	Moraceae	Northeastern India & southern Indonesia
Big-leaved Fig	<i>Ficus nekbudu</i>	Moraceae	Tropical Africa
Creeping Fig	<i>Ficus pumila</i>	Moraceae	Japan to Vietnam
Mount Airy Bottlebrush	<i>Fothergilla x 'Mount Airy'</i>	Hamamelidaceae	Hybrid/Cultivar, SE United States
Fuchsia	<i>Fuchsia x hybrida</i>	Onagraceae	Hybrid Origin, Mexico & S. America
Dyer's Broom	<i>Genista tinctoria</i>	Fabaceae	Europe
Maidenhair Tree	<i>Ginkgo biloba</i>	Ginkgoaceae	Southeast China
Kentucky Coffeetree	<i>Gymnocladus dioica</i>	Fabaceae	Midwest North America
Carolina Silver-Bell	<i>Halesia carolina</i>	Styracaceae	Southeastern United States
Ozark Witch Hazel	<i>Hamamelis vernalis</i>	Hamamelidaceae	South & central United States
Rose of Sharon	<i>Hibiscus syriacus</i>	Malvaceae	Asia
Wild Hydrangea	<i>Hydrangea arborescens</i>	Hydrangeaceae	East United States
Jim Dandy Winterberry	<i>Ilex verticillata</i> 'Jim Dandy'	Aquifoliaceae	Eastern & central United States
Red Sprite Winterberry	<i>Ilex verticillata</i> 'Red Sprite'	Aquifoliaceae	Eastern North America
Tassel-white	<i>Itea virginica</i>	Iteaceae	New Jersey to eastern Texas
Buffalo Juniper	<i>Juniperus sabina</i> 'Buffalo'	Cupressaceae	Central & Southern Europe
Kerria	<i>Kerria japonica</i>	Rosaceae	China, Japan & Korea
Pink Cloud Beauty Bush	<i>Kolwitzia amabilis</i> 'Pink cloud'	Caprifoliaceae	Central China
Yellow Sage	<i>Lantana camara</i>	Verbenaceae	Tropical America
European Larch	<i>Larix decidua</i>	Pinaceae	Northern Europe

Woody Perennials

Common name	Latin Name	Family	Origin
Spicebush	<i>Lindera benzoin</i>	<i>Lauraceae</i>	Eastern North America
Sweetgum	<i>Liquidambar styraciflua</i>	<i>Altingiaceae</i>	Central America to Eastern N. America
Tulip Tree	<i>Liriodendron tulipifera</i>	<i>Magnoliaceae</i>	Eastern North America
Amur Maackia	<i>Maackia amurensis</i>	<i>Fabaceae</i>	Eastern Asia
Royal Star Magnolia	<i>Magnolia stellata</i> ‘ Royal Star ’	<i>Magnoliaceae</i>	Central Japan
Saucer Magnolia	<i>Magnolia X soulangiana</i> ‘ Alexandrina ’	<i>Magnoliaceae</i>	Parents are <i>M. heptapeta</i> x <i>M. quinquepeta</i>
Crab Apple ‘Profusion’	<i>Malus x moerlandsii</i> ‘ Profusion ’	<i>Rosaceae</i>	Hybrid/Cultivar
Dawn redwood	<i>Metasequoia glyptostroboides</i>	<i>Cupressaceae</i>	China
Weeping White Mulberry	<i>Morus alba</i> ‘ Pendula ’	<i>Moraceae</i>	Central and Eastern China
Common Oleander	<i>Nerium oleander</i>	<i>Apocynaceae</i>	Mediterranean region
Snow-Wreath	<i>Neviusia alabamensis</i>	<i>Rosaceae</i>	Alabama
Sour gum	<i>Nyssa sylvatica</i>	<i>Cornaceae + Nyssaceae</i>	Eastern North America
American Hophornbeam	<i>Ostrya virginiana</i>	<i>Betulaceae</i>	Eastern North Amer. To Mexico
Tree Peony	<i>Paeonia suffruticosa</i>	<i>Paeoniaceae</i>	China
Princesstree INVASIVE	<i>Paulownia tomentosa</i>	<i>Paulowniaceae</i>	central and western China
Canby’s mountain-lover	<i>Paxistima canbyi</i>	<i>Celastraceae</i>	The Appalachian Region of the eastern U.S.
Ninebark	<i>Physocarpus opulifolius</i> ‘ Center Glow ’	<i>Rosaceae</i>	Eastern North America
Black Hills white spruce	<i>Picea glauca</i> var. <i>densata</i>	<i>Pinaceae</i>	South Dakota- The Black Hills
London Plane Tree	<i>Platanus x acerifolia</i>	<i>Platanaceae</i>	Parents: <i>P. occidentalis</i> X <i>P. orientalis</i>
Shrubby Cinquefoil	<i>Potentilla fruticosa</i>	<i>Rosaceae</i>	North Holarctic
Snow Fountains Weeping Cherry	<i>Prunus x ‘Snofozam</i> ’	<i>Rosaceae</i>	Hybrid/Cultivar
Rocky Mountain Douglas fir	<i>Pseudotsuga menziesii</i> subsp. <i>glauca</i>	<i>Pinaceae</i>	Western North America
Hop tree	<i>Ptelea trifoliata</i>	<i>Rutaceae</i>	North and Central America
Pomegranate	<i>Punica granatum</i>	<i>Lythraceae</i>	Iran
Bradford Callery Pear	<i>Pyrus calleryana</i> ‘ Bradford ’	<i>Rosaceae</i>	Parents from China & Vietnam
Korean Sun Pear	<i>Pyrus fauriei</i>	<i>Rosaceae</i>	Korea & Japan
Northern Hi-Lights Azalea	<i>Rhododendron</i> ‘ Northern Hi-Lights ’	<i>Ericaceae</i>	Developed by the University of Minnesota
Rhododendron	<i>Rhododendron</i> ‘ P.J.M. ’	<i>Ericaceae</i>	Hybrid Origin
Jetbead	<i>Rhodotypos scandens</i>	<i>Rosaceae</i>	China and Japan
Clove Currant	<i>Ribes odoratum</i>	<i>Grossulariaceae</i>	Central United State
Carolina Rose	<i>Rosa carolina</i>	<i>Rosaceae</i>	Eastern & c. N. America

Woody Perennials

Common name	Latin Name	Family	Origin
kordesii rose	<i>Rosa x 'William Baffin'</i>	<i>Rosaceae</i>	Hybrid/Cultivar
Carefree Delight Rose	<i>Rosa x 'Meipotal'</i>	<i>Rosaceae</i>	Hybrid/Cultivar
Weeping Pussy Willow	<i>Salix caprea 'Pendula'</i>	<i>Salicaceae</i>	Eurasia
Prairie Willow	<i>Salix humilis</i>	<i>Salicaceae</i>	Eastern N. America
Sassafras	<i>Sassafras albidum</i>	<i>Lauraceae</i>	Maine to Florida and Texas
Five-flavor Berry	<i>Schizandra chinensis</i>	<i>Schizandraceae</i>	N. China & far east Russia
Spiraea	<i>Spiraea japonica 'Bumalda'</i>	<i>Rosaceae</i>	Parents from eastern Asia
American bladdernut	<i>Staphylea trifolia</i>	<i>Staphyleaceae</i>	Eastern North America
White Hedge Snowberry	<i>Symphoricarpos albus 'White Hedge'</i>	<i>Caprifoliaceae</i>	North America
Miss Kim Lilac	<i>Syringa 'Miss Kim'</i>	<i>Oleaceae</i>	Hybrid/Cultivar
Japanese Tree Lilac	<i>Syringa reticulata</i>	<i>Oleaceae</i>	Japan
Chinese Lilac	<i>Syringa x chinensis</i>	<i>Oleaceae</i>	Hybrid Origin
Bald Cypress	<i>Taxodium distichum</i>	<i>Cupressaceae</i>	Southeastern United State
Taunton Yew	<i>Taxus X media 'Tauntonii'</i>	<i>Taxaceae</i>	Hybrid/Cultivar
American Arborvitae	<i>Thuja occidentalis 'Smaragd'</i>	<i>Cupressaceae</i>	North America
Littleleaf Linden	<i>Tilia cordata</i>	<i>Malvaceae</i>	Europe
Compact Koreanspice Viburnum	<i>Viburnum carlesii 'Compactum'</i>	<i>Adoxaceae</i>	Korea, Japan
Cayuga Korean Spice Viburnum	<i>Viburnum carlesii 'Cayuga'</i>	<i>Adoxaceae</i>	Korea, Japan
Dwarf European Cranberrybush	<i>Viburnum opulus 'Nanum'</i>	<i>Adoxaceae</i>	Europe, northwest Africa & Asia
Grape	<i>Vitis labrusca 'Concord'</i>	<i>Vitaceae</i>	Eastern United State
Common Grape Vine	<i>Vitis vinifera</i>	<i>Vitaceae</i>	Iran to Portugal
Weigela	<i>Weigela florida</i>	<i>Caprifoliaceae</i>	Northern China, Korea
Chinese Wisteria INVASIVE	<i>Wisteria sinensis</i>	<i>Fabaceae</i>	China
Adam's Needle	<i>Yucca filamentosa</i>	<i>Asparagaceae</i>	Southeastern United State
Japanese Zelkova	<i>Zelkova serrata</i>	<i>Ulmaceae</i>	Korea, Japan and Taiwan

Herbaceous Perennials

Common Name	Latin Name	Family	Origin
Angelique Yarrow	<i>Achillea hybrida</i> 'Angelique'	Asteraceae	Hybrid Origin
Yarrow	<i>Achillea millefolium</i>	Asteraceae	Temperate regions of the Northern Hemisphere
Carmichael's Monkshood	<i>Aconitum carmichaelii</i>	Ranunculaceae	East Asia and eastern Russia
Northern Maidenhair Fern	<i>Adiantum pedatum</i>	Pteridaceae	Eastern N. America
Lady's Mantle	<i>Alchemilla mollis</i>	Rosaceae	Eastern Carpathians, Caucasus
Star of Persia	<i>Allium cristophii</i>	Amaryllidaceae	Iran & Turkey
Ornamental Onion	<i>Allium karataviense</i>	Amaryllidaceae	Turkestan
Chive	<i>Allium schoenoprasum</i>	Amaryllidaceae	Eurasia
German Garlic	<i>Allium senescense</i>	Amaryllidaceae	Europe to Siberia
Round-headed leek	<i>Allium sphaerocephalon</i>	Amaryllidaceae	Northern Africa, western Asia as far east as Iran
Giant Upright Elephant Ear	<i>Alocasia odora</i>	Araceae	Vietnam
Bluestar	<i>Amsonia tabernaemontana</i>	Apocynaceae	Southeastern United States.
Japanese Anemone	<i>Anemone hupehensis</i>	Ranunculaceae	China
Pasque Flower	<i>Anemone pulsatilla</i>	Ranunculaceae	Europ
European Wood Anemone	<i>Anemone sylvestris</i>	Ranunculaceae	Eurasia
Canada Columbine	<i>Aquilegia canadensis</i>	Ranunculaceae	Eastern North America
Caucasian rockcress	<i>Arabis caucasica</i>	Brassicaceae	S. eastern Europe and the Mediterranean region
Cordate Spikenard	<i>Aralia cordata</i>	Apiaceae	Japan
Spikenard	<i>Aralia racemosa</i>	Apiaceae	Eastern North America
Jack-in-the-Pulpit	<i>Arisaema triphyllum</i>	Araceae	Eastern North America
Sea Thrift	<i>Armeria maritima</i>	Plumbaginaceae	Northwestern Europe
Tarragon	<i>Artemisia dracunculus</i> var. <i>sativa</i>	Asteraceae	Nothern Hemisphere
Italian arum	<i>Arum italicum</i>	Araceae	S. Europe to w. Asia
Goat's Beard	<i>Aruncus dioicus</i>	Rosaceae	Eurasia & North America
Wild Ginger	<i>Asarum canadense</i>	Aristolochiaceae	Eastern North America
European Wild Ginger	<i>Asarum europaeum</i>	Aristolochiaceae	Europe
Mexican Butterfly Weed	<i>Asclepias curassavica</i>	Apocynaceae	South America
Swamp Milkweed	<i>Asclepias incarnata</i>	Apocynaceae	Eastern North America
Butterfly Weed	<i>Asclepias tuberosa</i>	Apocynaceae	North America
Chinese Astilbe	<i>Astilbe chinensis</i> 'Little Vision in Pink'	Saxifragaceae	China & Japan
Japanese Astilbe	<i>Astilbe japonica</i>	Saxifragaceae	Japan

Herbaceous Perennials

Common Name	Latin Name	Family	Origin
False Spirea	<i>Astilbe X arendsii</i> 'Montgomery'	Saxifragaceae	Hybrid/Cultivar
Japanese Painted Fern	<i>Athyrium nipponicum</i> var. <i>pictum</i>	Woodsiaceae	Eastern Asia
Common Aubrieta	<i>Aubrieta deltoidea</i> 'Purple Heart'	Brassicaceae	Northeastern Mediterranean
Basket of Gold	<i>Aurinia saxatilis</i> 'Flora Plena'	Brassicaceae	Central & southern Europe
Blue False indigo	<i>Baptisia australis</i>	Fabaceae	North America-Appalachian
Pigsqueak	<i>Bergenia cordifolia</i>	Saxifragaceae	Russia
Bergenia	<i>Bergenia crassifolia</i>	Saxifragaceae	Siberia
Chinese Bergenia	<i>Bergenia stracheyi</i>	Saxifragaceae	Afghanistan and Tajikistan
Angel's Trumpet	<i>Brugmansia suaveolens</i>	Solanaceae	Southeastern Brazil
Siberian Bugloss	<i>Brunnera macrophylla</i>	Boraginaceae	Western Siberia
Angel Wings	<i>Caladium bicolor</i>	Araceae	Tropical South America
Korean Feather Reed	<i>Calamagrostis brachytricha</i>	Poaceae	Eastern Asia
Inch Plant	<i>Callisia fragrans</i>	Commelinaceae	South America
Marsh Marigold	<i>Caltha palustris</i>	Ranunculaceae	Northern Hemisphere
Tussock Bellflower	<i>Campanula carpatica</i> 'Blue Clips'	Campanulaceae	Carpathians
Tussock Bellflower	<i>Campanula carpatica</i> 'White Clips'	Campanulaceae	Carpathians
Clustered Bellflower	<i>Campanula glomerata</i> 'Caroline'	Campanulaceae	Temperate regions of northern Hemisphere
Bellflower	<i>Campanula latifolia</i> 'Brentwood'	Campanulaceae	Europe to Kashmir
Willow Bellflower	<i>Campanula persicifolia</i> 'Single White'	Campanulaceae	Europe to northern Asia
Bluebell	<i>Campanula rotundifolia</i> 'Alba'	Campanulaceae	Temperate regions of Northern Hemisphere
Persian Cornflower	<i>Centaurea dealbata</i> 'Steenbergi'	Asteraceae	Caucasus Mountains
Mountain Bluet	<i>Centaurea montana</i> 'Jordy'	Asteraceae	Central & south Europe
Red Valerian	<i>Centranthus ruber</i>	Valerianaceae	Mediterranean
Snow-In-Summer	<i>Cerastium tomentosum</i>	Caryophyllaceae	Italy
Woodoats	<i>Chasmanthium latifolium</i>	Poaceae	C. & eastern U.S.s, Manitoba, and n.s. Mexico
Turtlehead	<i>Chelone glabra</i>	Plantaginaceae	Eastern North America
Garden Mum	<i>Chrysanthemum morifolium</i>	Asteraceae	China
Black Snakeroot	<i>Cimicifuga racemosa</i>	Ranunculaceae	Eastern North America
Clematis	<i>Clematis integrifolia</i>	Ranunculaceae	Southern Europe
Upright Clematis	<i>Clematis recta</i>	Ranunculaceae	Europe
Autumn Crocus	<i>Colchicum autumnale</i>	Colchicaceae	Europe & n. Africa

Herbaceous Perennials

Common Name	Latin Name	Family	Origin
Tick Seed	<i>Coreopsis verticillata</i>	Asteraceae	North America
Montbretia	<i>Crocsmia 'Lucifer'</i>	Iridaceae	Grasslands of southern and eastern Africa
Alpine Larkspur	<i>Delphinium elatum 'Magic Fountain Mix'</i>	Ranunculaceae	S. & c. Europe to Siberia
Silvery Glade Fern	<i>Deparia acrostichoides</i>	Athriaceae	United States & eastern Asia
Male Fern	<i>Deropteris filix-mas</i>	Dryopteridaceae	Europe, Asia & North America
Tufted Hair Grass	<i>Deschampia caespitosa 'Northern Lights'</i>	Poaceae	Cosmopolitan
Sweet William	<i>Dianthus barbatus</i>	Caryophyllaceae	Carpathians
Rainbow Pink	<i>Dianthus chinensis</i>	Caryophyllaceae	China
Maiden Pink	<i>Dianthus deltoides 'Zing Salmon'</i>	Caryophyllaceae	Europe
Western Bleeding-Heart	<i>Dicentra formosa</i>	Papaveraceae	British Columbia to California
Bleeding Heart	<i>Dicentra spectabilis</i>	Papaveraceae	Japan
Gas Plant	<i>Dictamnus albus</i>	Rutaceae	SW. Europe, s. & c. Asia to Korea
Yellow Foxglove	<i>Digitalis grandiflora 'Carillon'</i>	Plantaginaceae	Europe
Common Foxglove	<i>Digitalis purpurea 'Foxy'</i>	Plantaginaceae	Mediterranean region
Fairy bells	<i>Disporum uniflorum</i>	Colchicaceae	Korea
Shooting Star	<i>Dodecatheon meadia</i>	Primulaceae	Eastern United States
Log Fern	<i>Dryopteris celsa</i>	Dryopteridaceae	Eastern United States
Clinton's Wood Fern	<i>Dryopteris clintoniana</i>	Dryopteridaceae	Northeastern North America
Goldie's Shield Ferns	<i>Dryopteris goldieana</i>	Dryopteridaceae	Northeastern America
Intermediate Wood Fern	<i>Dryopteris intermedia</i>	Dryopteridaceae	Eastern N. America & Europe
Marginal Wood Fern	<i>Dryopteris marginalis</i>	Dryopteridaceae	North America
Pale Purple Coneflower	<i>Echinacea pallida</i>	Asteraceae	South & central United States
Purple Coneflower	<i>Echinacea purpurea 'Paw Paw White'</i>	Asteraceae	Central to southeastern United States
Purple Coneflower	<i>Echinacea purpurea 'Primadonna Deep Rose'</i>	Asteraceae	Central to southeastern United States
Purple Coneflower	<i>Echinacea purpurea Leuchtstern 'White Star'</i>	Asteraceae	Central to southeastern United States
Bishop Hat	<i>Epimedium X rubrum</i>	Berberidaceae	Garden origin
Eryngo	<i>Eryngium planum</i>	Apiaceae	Eurasia
Prairie Smoke	<i>Erythrocoma triflora</i>	Rosaceae	Northcentral North America
Spurge	<i>Euphorbia epithymoides (E. polychroma)</i>	Euphorbiaceae	Eastern Europe
Blue Festuca	<i>Festuca ovina var. glauca</i>	Poaceae	Europe
Venusta Queen-of-the-Prairie	<i>Filipendula rubra 'Venusta Magnifica'</i>	Rosaceae	Eastern United States

Herbaceous Perennials

Common Name	Latin Name	Family	Origin
Red Crown Imperial	<i>Fritillaria imperialis</i>	Liliaceae	Turkey to Himalayan
Checkered Lily	<i>Fritillaria meleagris</i>	Liliaceae	Northwest Europe to Caucasus
Common Snowdrop	<i>Galanthus nivalis</i>	Amaryllidaceae	Europe
Sweet Woodruff	<i>Galium odoratum</i>	Rubiaceae	Europe, Asia & N. Africa
Yellow Bedstraw	<i>Galium verum</i>	Rubiaceae	Europe to Iran
Gaura	<i>Gaura lindheimeri</i> ‘Whirling Butterflies’	Onagraceae	Southern Texas
Wood Geranium	<i>Geranium maculatum</i>	Geraniaceae	Neastern United States
Meadow Cranesbill	<i>Geranium pratense</i>	Geraniaceae	Eurasia
Cranesbill	<i>Geranium sanguineum</i>	Geraniaceae	Eurasia
Red Avens	<i>Geum coccineum</i> ‘Cooky’	Rosaceae	Turkey to se. Europe
Wild Licorice	<i>Glycyrrhiza lepidota</i>	Fabaceae	Central North America
Baby’s-Breath	<i>Gypsophila paniculata</i> ‘Compacta Plena’	Caryophyllaceae	Eurasia
Creeping Baby’s Breath	<i>Gypsophila repens</i>	Caryophyllaceae	Mountains of c. & s. Europe
Heliotrope	<i>Heliotropium arborescens</i> ‘Mini Marine’	Boraginaceae	Peru
Hellebore	<i>Helleborus orientalis</i>	Ranunculaceae	Greece, Turkey to Caucasian Russia
Daylily	<i>Hemerocallis</i> x ‘Autumn Prince’	Xanthorrhoeaceae	Hybrid/Cultivar, Parents from Eurasia
Daylily	<i>Hemerocallis</i> x ‘Easy Ned’	Xanthorrhoeaceae	Hybrid/Cultivar, Parents from Eurasia
Daylily	<i>Hemerocallis</i> x ‘Eenie Allegro’	Xanthorrhoeaceae	Hybrid/Cultivar, Parents from Eurasia
Daylily	<i>Hemerocallis</i> x ‘Elfin Stella’	Xanthorrhoeaceae	Hybrid/Cultivar, Parents from Eurasia
Daylily	<i>Hemerocallis</i> x ‘Fairy Charm’	Xanthorrhoeaceae	Hybrid/Cultivar, Parents from Eurasia
Daylily	<i>Hemerocallis</i> x ‘Final Touch’	Xanthorrhoeaceae	Hybrid/Cultivar, Parents from Eurasia
Daylily	<i>Hemerocallis</i> x ‘Francis Joiner’	Xanthorrhoeaceae	Hybrid/Cultivar, Parents from Eurasia
Daylily	<i>Hemerocallis</i> x ‘Fuchsia Dream’	Xanthorrhoeaceae	Hybrid/Cultivar, Parents from Eurasia
Daylily	<i>Hemerocallis</i> x ‘Gentle Shepherd’	Xanthorrhoeaceae	Hybrid/Cultivar, Parents from Eurasia
Daylily	<i>Hemerocallis</i> x ‘Golden Chimes’	Xanthorrhoeaceae	Hybrid/Cultivar, Parents from Eurasia
Daylily	<i>Hemerocallis</i> x ‘Happy Returns’	Xanthorrhoeaceae	Hybrid/Cultivar, Parents from Eurasia
Daylily	<i>Hemerocallis</i> x ‘Highland Lord’	Xanthorrhoeaceae	Hybrid/Cultivar, Parents from Eurasia
Daylily	<i>Hemerocallis</i> x ‘Hperion’	Xanthorrhoeaceae	Hybrid/Cultivar, Parents from Eurasia
Daylily	<i>Hemerocallis</i> x ‘Indigo Moon’	Xanthorrhoeaceae	Hybrid/Cultivar, Parents from Eurasia
Daylily	<i>Hemerocallis</i> x ‘Ivory Edges’	Xanthorrhoeaceae	Hybrid/Cultivar, Parents from Eurasia
Daylily	<i>Hemerocallis</i> x ‘Kent’s Favorite Two’	Xanthorrhoeaceae	Hybrid/Cultivar, Parents from Eurasia

Herbaceous Perennials

Common Name	Latin Name	Family	Origin
Daylily	<i>Hemerocallis</i> x ' Lilting Belle '	<i>Xanthorrhoeaceae</i>	Hybrid/Cultivar, Parents from Eurasia
Daylily	<i>Hemerocallis</i> x ' Red Mittens '	<i>Xanthorrhoeaceae</i>	Hybrid/Cultivar, Parents from Eurasia
Daylily	<i>Hemerocallis</i> x ' Rosy Returns '	<i>Xanthorrhoeaceae</i>	Hybrid/Cultivar, Parents from Eurasia
Daylily	<i>Hemerocallis</i> x ' September Gold '	<i>Xanthorrhoeaceae</i>	Hybrid/Cultivar, Parents from Eurasia
Daylily	<i>Hemerocallis</i> x ' Siloam David Kirchoff '	<i>Xanthorrhoeaceae</i>	Hybrid/Cultivar, Parents from Eurasia
Daylily	<i>Hemerocallis</i> x ' Spiderman '	<i>Xanthorrhoeaceae</i>	Hybrid/Cultivar, Parents from Eurasia
Daylily	<i>Hemerocallis</i> x ' Toyland '	<i>Xanthorrhoeaceae</i>	Hybrid/Cultivar, Parents from Eurasia
Daylily	<i>Hemerocallis</i> x ' White Temptation '	<i>Xanthorrhoeaceae</i>	Hybrid/Cultivar. Parents from Eurasia
Coral Bells	<i>Heuchera</i> x ' Georgia Peach '	<i>Saxifragaceae</i>	Hybrid/Cultivar
Coral Bells	<i>Heuchera</i> x ' Green Spice '	<i>Saxifragaceae</i>	Hybrid/Cultivar
Fancy-leaf Coral Bells	<i>Heuchera</i> x ' Mint Frost '	<i>Saxifragaceae</i>	Hybrid/Cultivar
Fancy-leaf Heuchera	<i>Heuchera</i> x ' Purple Shanghai '	<i>Saxifragaceae</i>	Hybrid/Cultivar
Coralbells	<i>Heuchera</i> x <i>sanguinea</i> ' Bressingham Hybrids '	<i>Saxifragaceae</i>	Hybrid/Cultivar
Rose Mallow	<i>Hibiscus moscheutos</i>	<i>Malvaceae</i>	southeastern United State
Hardy Hibiscus	<i>Hibiscus moscheutos</i> ' Kopper King '	<i>Malvaceae</i>	Se.United State to s. Ontario
Hosta	<i>Hosta</i> ' June '	<i>Asparagaceae</i>	Hybrid/Cultivar, Parents from northeast Asia
Hosta	<i>Hosta</i> ' Blue Umbrellas '	<i>Asparagaceae</i>	Hybrid/Cultivar, Parents from northeast Asia
Hosta	<i>Hosta</i> ' Fall Bouquet '	<i>Asparagaceae</i>	Hybrid/Cultivar, Parents from northeast Asia
Hosta	<i>Hosta</i> ' Gold Edges '	<i>Asparagaceae</i>	Hybrid/Cultivar, Parents from northeast Asia
Hosta	<i>Hosta</i> ' Golden Sculpture '	<i>Asparagaceae</i>	Hybrid/Cultivar, Parents from northeast Asia
Hosta	<i>Hosta</i> ' Halcyon '	<i>Asparagaceae</i>	Hybrid/Cultivar, Parents from northeast Asia
Hosta	<i>Hosta</i> ' Hiroo Majesty '	<i>Asparagaceae</i>	Hybrid/Cultivar, Parents from northeast Asia
Hosta	<i>Hosta</i> ' Kross Regal '	<i>Asparagaceae</i>	Hybrid/Cultivar, Parents from northeast Asia
Hosta	<i>Hosta</i> ' Parky's Prize '	<i>Asparagaceae</i>	Hybrid/Cultivar, Parents from northeast Asia
Hosta	<i>Hosta</i> ' Potomac Pride '	<i>Asparagaceae</i>	Hybrid/Cultivar, Parents from northeast Asia
Hosta	<i>Hosta</i> ' Robert Frost '	<i>Asparagaceae</i>	Hosta 'Banana Sundae' x Hosta 'Frances Williams'
Hosta	<i>Hosta</i> ' Stepping Out '	<i>Asparagaceae</i>	Hybrid/Cultivar, Parents from northeast Asia
Hosta	<i>Hosta</i> ' Titanic '	<i>Asparagaceae</i>	Hybrid/Cultivar, Parents from northeast Asia
Hosta	<i>Hosta clausa</i> var. <i>normalis</i>	<i>Asparagaceae</i>	Korea
Common Hop	<i>Humulus lupulus</i>	<i>Cannabaceae</i>	North temperate regions
Hyacinth	<i>Hyacinthus orientalis</i> ' Jambalaya '	<i>Asparagaceae</i>	E. Mediterranean, Iran to Turkmenistan

Herbaceous Perennials

Common Name	Latin Name	Family	Origin
Stonecrop	<i>Hylotelephium spectabile</i>	Crassulaceae	China & Korea
Evergreen Candytuft	<i>Iberis sempervirens</i>	Brassicaceae	Southern Europe
garden candytuft[<i>Iberis umbellatas</i>	Brassicaceae	Southern Europe
Japanese Blood Grass	<i>Imperata cylindrica</i> 'Red Baron'	Poaceae	Africa, Asia & Australia
Elecampane	<i>Inula helenium</i>	Asteraceae	Central Asia
Iris	<i>Iris germanica</i> 'Breakers'	Iridaceae	Eastern Mediterranean region
Iris	<i>Iris germanica</i> 'Edith Wolby'	Iridaceae	Eastern Mediterranean region
Iris	<i>Iris germanica</i> 'Slovak Prince'	Iridaceae	Eastern Mediterranean region
Blackberry Lily	<i>Iris domestica</i> (<i>Blemacanda chinensis</i>)	Iridaceae	China
Japanese Water Iris	<i>Iris kaempferi</i> (<i>I. ensata</i>) 'Crystal Halo'	Iridaceae	Japan
Slender Blue Flag	<i>Iris prismatica</i>	Iridaceae	Eastern North America
Yellow Iris INVASIVE	<i>Iris pseudacorus</i>	Iridaceae	Western Europe & Northern Africa
Dwarf Iris	<i>Iris pumila</i>	Iridaceae	Eurasia
Siberian Iris	<i>Iris sibirica</i>	Iridaceae	Central Europe to Russia
Blue Flag	<i>Iris versicolor</i>	Iridaceae	North America
Woad	<i>Isatis tinctoria</i>	Brassicaceae	Steppe & desert of Caucasus
Twinleaf	<i>Jeffersonia diphylla</i>	Berberidaceae	Eastern North America
Sundrop	<i>Kneiffia</i> (<i>Oenothera</i>) <i>fruticosa</i>	Onagraceae	Southern U.S.
Poker Plant	<i>Kniphofia uvaria</i>	Xanthorrhoeaceae	Southern Africa
Red-Hot Poker Plant	<i>Kniphofia uvaria</i> 'Flamemco'	Xanthorrhoeaceae	southern Africa
Spotted Dead Nettle	<i>Lamium maculatum</i>	Lamiaceae	Eastern North America
Balm-leaved Archangel	<i>Lamium orvala</i> 'Silva'	Lamiaceae	Europe
English Lavender	<i>Lavandula angustifolia</i>	Lamiaceae	Mediterranean region
Shasta Daisy	<i>Leucanthemum x superbum</i>	Asteraceae	Hybrid Origin/ Parents from Europe
Blazing Star	<i>Liatris spicata</i>	Asteraceae	Eastern United State
Orange Ligularia	<i>Ligularia dentata</i>	Asteraceae	China & Japan
The Rocket	<i>Ligularia stenocephala</i>	Asteraceae	China, Japan & Taiwan
Orange Lily	<i>Lilium bulbiferum</i>	Liliaceae	Europe
Orange Lily	<i>Lilium henryi</i>	Liliaceae	Central China
Lily	<i>Lilium hybridum</i> 'Orange Bell'	Liliaceae	Hybrid Origin
Lily	<i>Lilium hybridum</i> 'Urandi'	Liliaceae	Hybrid Origin

Herbaceous Perennials

Common Name	Latin Name	Family	Origin
Lily	<i>Lilium hybridum</i> 'Albany'	Liliaceae	Hybrid Origin
Asiatic Lily	<i>Lilium hybridum</i> 'Royal Sunset'	Liliaceae	Hybrid Origin
Lily	<i>Lilium hybridum</i> 'Vice Versa'	Liliaceae	Hybrid Origin
Lily	<i>Lilium hybridum</i> 'Yelloween'	Liliaceae	Hybrid Origin
Lily	<i>Lilium hybridum</i> 'Zagora'	Liliaceae	Hybrid Origin
Lily	<i>Lilium orientalis</i> 'Angelique'	Liliaceae	Hybrid Origin
Lily	<i>Lilium orientalis</i> 'Bright Star'	Liliaceae	Hybrid Origin
Lily	<i>Lilium orientalis</i> 'Broadway'	Liliaceae	Hybrid Origin
Lily	<i>Lilium orientalis</i> 'Double Prize'	Liliaceae	Hybrid Origin
Lily	<i>Lilium orientalis</i> 'Shocking'	Liliaceae	Hybrid Origin
Lily	<i>Lilium orientalis</i> 'Siberia'	Liliaceae	Hybrid Origin
Stargazer Lily	<i>Lilium orientalis</i> 'White Stargazer'	Liliaceae	Hybrid Origin
Sea Lavender	<i>Limonium platyphyllum</i>	Plumbaginaceae	Southeastern Europe
Perennial Flax	<i>Linum perenne</i>	Linaceae	Europe
Cardinal Flower	<i>Lobelia cardinalis</i>	Campanulaceae	Eastern North America
Great Blue Lobelia	<i>Lobelia siphilitica</i>	Campanulaceae	Central N. America
Sweet Alyssum	<i>Lobularia maritima</i>	Brassicaceae	Southern Europe
Honesty	<i>Lunaria biennis</i>	Brassicaceae	Southern Europe
Lupine	<i>Lupinus polyphyllus</i> 'My Castle'	Fabaceae	California to British Columbia
Lupine	<i>Lupinus polyphyllus</i> 'White Shade'	Fabaceae	California to British Columbia
Orange Campion	<i>Lychnis x haageana</i> 'Molten Lava'	Caryophyllaceae	Hybrid/Cultivar
Resurrection Lily	<i>Lycoris squamigera</i>	Amaryllidaceae	Japan
Plume Poppy	<i>Macleaya cordata</i>	Papaveraceae	China & Japan
Common Mallow	<i>Malva sylvestris</i>	Malvaceae	Western Europe, North Africa and Asia
Mazus	<i>Mazus reptans</i>	Phrymaceae	Himalayas
Bluebells	<i>Mertensia virginica</i>	Boraginaceae	Eastern N. America
Japanese Silver Grass	<i>Miscanthus sinensis</i> 'Kaskade'	Poaceae	Eastern Asia
Flame Grass	<i>Miscanthus sinensis</i> var. <i>purpurascens</i>	Poaceae	Japan
Beebalm	<i>Monarda didyma</i>	Lamiaceae	Eastern N. America
Common Grape Hyacinth	<i>Muscari botryoides</i>	Asparagaceae	Central and s. Europe
Glade Mallow	<i>Napaea dioica</i>	Malvaceae	Northeast North America

Herbaceous Perennials

Common Name	Latin Name	Family	Origin
Daffodils	<i>Narcissus spp.</i>	<i>Amaryllidaceae</i>	Europe
Lotus	<i>Nelumbo spp.</i>	<i>Nelumbonaceae</i>	Asia & North America
Water Lily	<i>Nymphaea spp.</i>	<i>Nymphaeaceae</i>	Cosmopolitan
Wild Evening Primrose	<i>Oenothera speciosa</i>	<i>Onagraceae</i>	Kansas to Texas
Prickly Pear	<i>Opuntia humifusa</i>	<i>Cactaceae</i>	Central and eastern United States
Oregano	<i>Origanum vulgare</i>	<i>Lamiaceae</i>	Eurasia
Cinnamon Fern	<i>Osmundastrum cinnamomeum</i>	<i>Osmundaceae</i>	N. & S. America, West Indies & e. Asia
Common Garden Peony	<i>Paeonia lactiflora</i>	<i>Paeoniaceae</i>	Central and eastern Asia
Garden Peony	<i>Paeonia officinalis</i>	<i>Paeoniaceae</i>	France, Switzerland and Italy
Tall Switch Grass	<i>Panicum virgatum</i> 'Warrior'	<i>Poaceae</i>	North America
Coral Reef Oriental Poppy	<i>Papaver orientale</i> 'Coral Reef'	<i>Papaveraceae</i>	Southwestern Asia
Corn Poppy	<i>Papaver rhoeas</i>	<i>Papaveraceae</i>	Eurasia
Fountain Grass	<i>Pennisetum alopecuroides</i> 'Hameln'	<i>Poaceae</i>	Asia & Australia
Black Flowering Fountain Grass	<i>Pennisetum alopecuroides</i> "Moudry"	<i>Poaceae</i>	Asia & Australia
Beard-Tongue	<i>Penstemon barbatus</i> 'Prairie Dusk'	<i>Plantaginaceae</i>	Utah to Mexico
White Beard-Tongue	<i>Penstemon digitalis</i>	<i>Plantaginaceae</i>	Eastern N. America
Snakeweed	<i>Persicaria bistorta</i> 'Superbum'	<i>Polygoniaceae</i>	Asia & northern Europe
Perennial Phlox	<i>Phlox paniculata</i> 'Coral Flame'	<i>Polemoniaceae</i>	Eastern United State
Moss Pink	<i>Phlox subulata</i> 'Fort Hill'	<i>Polemoniaceae</i>	Northeastern United State
Obedience	<i>Physostegia virginiana</i>	<i>Lamiaceae</i>	Northeastern North America
Pokeweed	<i>Phytolacca americana</i>	<i>Phytolaccaceae</i>	E. North America to n. Mexico
Balloon Flower	<i>Platycodon grandiflorus</i>	<i>Campanulaceae</i>	Eastern Asia
Mayapple	<i>Podophyllum peltatum</i>	<i>Berberidaceae</i>	Eastern North America
Jacob's Ladder	<i>Polemonium caeruleum</i>	<i>Polemoniaceae</i>	Eurasia
Stairway to Heaven	<i>Polemonium reptans</i>	<i>Polemoniaceae</i>	Eastern United State
Smooth Solomon's-Seal	<i>Polygonatum biflorum</i>	<i>Asparagaceae</i>	Eastern and central N. America
Solomon's-Seal	<i>Polygonatum humile</i>	<i>Asparagaceae</i>	Europe and Western Asia
Angular Solomon's-Seal	<i>Polygonatum odoratum</i>	<i>Asparagaceae</i>	Europe to Japan
Hairy Solomon's-Seal	<i>Polygonatum pubescens</i>	<i>Asparagaceae</i>	Eastern United State & Canada
Whorled Solomon's-Seal	<i>Polygonatum verticillatum</i>	<i>Asparagaceae</i>	Europe to Himalayas
Christmas Fern	<i>Polystichum acrostichoides</i>	<i>Dryopteridaceae</i>	Eastern N. America

Herbaceous Perennials

Common Name	Latin Name	Family	Origin
Indian Physic	<i>Porteranthus (Gillenia) stipulata</i>	<i>Rosaceae</i>	Eastern N. America
Cowslip	<i>Primula veris</i>	<i>Primulaceae</i>	Europe
Silver Speedwell	<i>Pseudolysimachion incanum (Veronica incana)</i>	<i>Plantaginaceae</i>	N. Asia, Russia
Spiked Speedwell	<i>Pseudolysimachion spicatum</i>	<i>Plantaginaceae</i>	Northern Europe & Asia
Bethlehem Sage	<i>Pulmonaria saccharata</i>	<i>Boraginaceae</i>	Europe
Rhubarb	<i>Rheum cultorum</i>	<i>Polygonaceae</i>	Manchuria
Rodgersia	<i>Rodgersia pinnata</i>	<i>Saxifragaceae</i>	China
Coneflower	<i>Rudbeckia fulgida</i>	<i>Asteraceae</i>	Eastern United State
Black-eyed Susan	<i>Rudbeckia hirta</i>	<i>Asteraceae</i>	Eastern United State
Large Coneflower	<i>Rudbeckia maxima</i>	<i>Asteraceae</i>	Central and southern United State
Red-veined dock	<i>Rumex sanguineus var. sanguineus</i>	<i>Polygoniaceae</i>	Europe, southwestern Asia, northern Africa
Common Rue	<i>Ruta graveolens</i>	<i>Rutaceae</i>	Southern Europe
Woodland Sage	<i>Salvia nemerosa</i>	<i>Lamiaceae</i>	C. Europe & w. Asia
Garden Sage	<i>Salvia officinalis</i>	<i>Lamiaceae</i>	Mediterranean region
Wood Sage	<i>Salvia x sylvestris 'Mainacht'</i>	<i>Lamiaceae</i>	Hybrid Origin
Bloodroot	<i>Sanguinaria canadensis</i>	<i>Papaveraceae</i>	Eastern North America
Burnet	<i>Sanguisorba obtusa</i>	<i>Rosaceae</i>	Japan
Soapwort	<i>Saponaria x lempergii 'Max Frei'</i>	<i>Caryophyllaceae</i>	Hybrid Origin
Upright wild ginger	<i>Saruma henryi</i>	<i>Aristolochiaceae</i>	China
Caucasian Scabious	<i>Scabiosa caucasica</i>	<i>Caprifoliaceae</i>	Caucasus, Ne. Turkey & N. Iran
Little Blue Stem	<i>Schizachyrium scoparium 'Twilight Zone'</i>	<i>Poaceae</i>	North America
Wild Senna	<i>Senna marilandica</i>	<i>Fabaceae</i>	Eastern United State to Texas
Rose Campion	<i>Silene coronaria (Lychnis coronaria)</i>	<i>Caryophyllaceae</i>	Eastern Mediterranean
Rollies Favourite Campion	<i>Silene x robotii 'Rollies Favorite'</i>	<i>Caryophyllaceae</i>	Hybrid Origin
Cup Plant	<i>Silphium perfoliatum</i>	<i>Asteraceae</i>	Central North America
Himalayan Mayapple	<i>Sinopodophyllum hexandrum (Podophyllum)</i>	<i>Berberidaceae</i>	Himalayas
Blue-Eyed Grass	<i>Sisyrinchium angustifolium</i>	<i>Iridaceae</i>	Eastern United State
Showy Goldenrod	<i>Solidago speciosa</i>	<i>Asteraceae</i>	Central and eastern United State
Lamb's Ears	<i>Stachys byzantina</i>	<i>Lamiaceae</i>	Southwestern Asia
New England Aster	<i>Symphyotrichum (Aster) novae-angliae</i>	<i>Asteraceae</i>	Ne. N. America to Alberta & Colorado
Greater Meadow Rue	<i>Thalictrum aquilegifolium</i>	<i>Ranunculaceae</i>	Eurasia

Herbaceous Perennials

Common Name	Latin Name	Family	Origin
Yellow Meadow Rue	<i>Thalictrum flavum</i>	<i>Ranunculaceae</i>	Eurasia
Blue-Ridge Buckbean	<i>Thermopsis villosa</i>	<i>Fabaceae</i>	Southern Appalachian
Garden Thyme	<i>Thymus vulgaris</i>	<i>Lamiaceae</i>	Mediterranean
Common Spiderwort	<i>Tradescantia ohiensis</i>	<i>Commelinaceae</i>	Eastern North America
Common Spiderwort	<i>Tradescantia virginiana</i>	<i>Commelinaceae</i>	Eastern United State
Spiderwort	<i>Tradescantia</i> x 'Zwanenburg Blue'	<i>Commelinaceae</i>	Hybrid/Cultivar
Globe Flower	<i>Trollius europaeus</i> ' Superbus '	<i>Ranunculaceae</i>	Mountains of Europe
Dwarf Globe Flower	<i>Trollius pumilus</i>	<i>Ranunculaceae</i>	China, Burma, Nepal & Bhutan
Tulip	<i>Tulipa</i> ' Cartouche '	<i>Liliaceae</i>	Hybrid/Cultivar
Tulip	<i>Tulipa</i> ' Vital Signs '	<i>Liliaceae</i>	Hybrid/Cultivar
Tulip	<i>Tulipa</i> " Strike Me Pink "	<i>Liliaceae</i>	Hybrid/Cultivar
Persian Pearl Tulip	<i>Tulipa humilis</i> var. <i>violacea</i>	<i>Liliaceae</i>	Iran
Flax-Leaved Tulip	<i>Tulipa linifolia</i>	<i>Liliaceae</i>	Iran and Afghanistan
Late Tulip	<i>Tulipa tarda</i>	<i>Liliaceae</i>	C. Asia
Tulip	<i>Tulipa</i> x ' Flair '	<i>Liliaceae</i>	Hybrid/Cultivar
Stinging Nettle	<i>Urtica dioica</i>	<i>Urticaceae</i>	Eurasia
Merrybells	<i>Uvularia grandiflora</i>	<i>Colchicaceae</i>	Eastern North America
Mullein	<i>Verbascum</i> x ' Plum Smokey '	<i>Scrophulariaceae</i>	Hybrid/Cultivar
Vervain	<i>Verbena bonariensis</i>	<i>Verbenaceae</i>	South America
Hoary Vervain	<i>Verbena stricta</i>	<i>Verbenaceae</i>	North America
Spiked Speedwell	<i>Veronica spicata</i>	<i>Plantaginaceae</i>	England
Culver's Root	<i>Veronicastrum virginicum</i>	<i>Plantaginaceae</i>	Northeastern North America

Tender Perennials

Common Name	Latin Name	Family	Origin
Lemon Verbena	<i>Aloysia citriodora</i>	Verbenaceae	South America
Angelonia	<i>Angelonia angustifolia</i> 'Serena Mix'	Plantaginaceae	Mexico, West Indies
Snapdragon	<i>Antirrhinum majus</i> 'Solcetic Red+Mix'	Plantaginaceae	Mediterranean regions
Baby Sun Rose	<i>Aptenia cordifolia</i>	Aizoaceae	Southern Africa
Dragon wing Begonia	<i>Begonia</i> 'Bepared'	Begoniaceae	Hybrid Origin
Benary Begonia	<i>Begonia x benariensis</i> 'Big Red'	Begoniaceae	Hybrid/Cultivar
Bedding Begonia	<i>Begonia x semperflorens</i>	Begoniaceae	Hybrid Origin
Bush Violet	<i>Browallia speciosa</i> 'Marine Bells'	Solanaceae	Colombia
Aquatic Canna	<i>Canna glauca</i> 'Erebus'	Cannaceae	Southern Texas
Indian Shot	<i>Canna indica</i>	Cannaceae	Caribbean and Tropical America
Garden Canna	<i>Canna X generalis</i>	Cannaceae	Parents from New World Tropics
Rose Periwinkle	<i>Catharanthus roseus</i> 'Pacific Red'	Apocynaceae	Madagascar
Cockscomb	<i>Celosia argentea</i> var. <i>cristata</i>	Amaranthaceae	Warm regions of Africa & America
Feather Amaranth	<i>Celosia argentea</i> var. <i>plumose</i> 'Fresh Look Mix'	Amaranthaceae	Warm regions of Africa & America
Brazilian Bachelor Button	<i>Centratherum punctatum</i>	Asteraceae	Brazil
Spider Plant	<i>Chlorophytum comosum</i>	Asparagaceae	Southern Africa
Job's-Tears	<i>Coix lacryma-jobi</i>	Poaceae	Southeastern Asia
Jumbo Elephant Ear	<i>Colocasia esculenta</i>	Araceae	Tropical e. Asia
False Heather	<i>Cuphea hyssopifolia</i>	Lythraceae	Mexico & Guatemala
Cigar Flower	<i>Cuphea ignea</i>	Lythraceae	Mexico to n. South America
Umbrella Plant	<i>Cyperus alternifolius</i>	Cyperaceae	Madagascar
Dahlia	<i>Dahlia variabilis</i> 'Star-Gazer'	Asteraceae	Mexico, C. America & Colombia
Water Hyacinth	<i>Eichhornia crassipes</i>	Pontederiaceae	Tropical America
California Poppy	<i>Eschscholzia californica</i>	Papaveraceae	California
Prairie Gentian	<i>Eustoma grandiflorum</i> 'Charisma Blue'	Gentianaceae	Great Plains - United State
Persian Violet	<i>Exacum affine</i>	Gentianaceae	Socotra
Cotton	<i>Gossypium hirsutum</i>	Malvaceae	Central America to Florida
Beach Sunflower	<i>Helianthus debilis</i>	Asteraceae	United States-Atlantic & Gulf Coasts
New Guinea Impatiens	<i>Impatiens hawkeri</i>	Balsaminaceae	Papua New Guinea and the Solomon Islands
Patient Lucy	<i>Impatiens walleriana</i>	Balsaminaceae	Tanzania to Mozambique
Laurentia	<i>Isotoma axillaris</i> 'Avant Garde'	Campanulaceae	Australia

Tender Perennials

Common Name	Latin Name	Family	Origin
Dusty Miller	<i>Jacobaea maritima</i> (<i>Senecio cineraria</i>) 'Cirrus'	Asteraceae	Mediterranean region
Edging Lobelia	<i>Lobelia erinus</i>	Campanulaceae	South Africa
Four O'clocks	<i>Mirabilis jalapa</i>	Nyctaginaceae	Tropical America
Edible Banana	<i>Musa x paradisiaca</i>	Musaceae	Parents from Southeast Asia
Flowering Tobacco	<i>Nicotiana glauca</i> 'Perfume Mix'	Solanaceae	South America
Sweet Marjoram	<i>Origanum majorana</i>	Lamiaceae	Cyprus & s. Turkey
Spanish Poppy	<i>Papaver rupifragum</i> 'Tangerine Gem'	Papaveraceae	S. Spain, N Africa
Ivy-Leaf Geranium	<i>Pelargonium peltatum</i>	Geraniaceae	South Africa
Zonal Geranium	<i>Pelargonium x hortorum</i> 'Maverick Appleblossom'	Geraniaceae	Hybrid/Cultivar
Star- Cluster	<i>Pentas lanceolata</i>	Rubiaceae	Eastern Tropical Africa to Arabia
Aluminum Plant	<i>Pilea cadierei</i>	Urticaceae	Vietnam
Black Pepper	<i>Piper nigrum</i>	Piperaceae	Southern India to Ceylon
Celebes Pepper	<i>Piper ornatum</i>	Piperaceae	Indonesia- Celebes Is.
Coleus	<i>Plectranthus scutellarioides</i>	Lamiaceae	Parents from Java
Rosemary	<i>Rosmarinus officinalis</i>	Lamiaceae	Mediterranean
Texas Sage	<i>Salvia coccinea</i>	Lamiaceae	Mexico
Pineapple Sage	<i>Salvia elegans</i>	Lamiaceae	Mexico
Mealy-Cup	<i>Salvia farinacea</i> 'Evolution'	Lamiaceae	Texas & Mexico
Scarlet Sage	<i>Salvia splendens</i> 'Vista Red'	Lamiaceae	Brazil
Fairy Fan-Flower	<i>Scaevola aemula</i>	Goodeniaceae	Southern Australia
Yellow-Eyed Grass	<i>Sisyrinchium californicum</i>	Iridaceae	British Columbia to C. California
Jerusalem Cherry	<i>Solanum pseudocapsicum</i>	Solanaceae	Old World
Jewels of Opar	<i>Talinum paniculatum</i>	Talinaceae	Southern United State to C. America
Toad Lily	<i>Tricyrtis macranthopsis</i>	Liliaceae	Japan
Horned Violet	<i>Viola cornuta</i> 'Sorbet XP Jump Up Mix'	Violaceae	Pyrenees & northern Spain
Pansy	<i>Viola tricolor</i>	Violaceae	Europe
Calla Lily	<i>Zantedeschia aethiopica</i>	Araceae	South Africa

Annuals

Common Name	Latin Name	Family	Origin
Floss Flower	<i>Ageratum houstonianum</i> 'High Tide'	Asteraceae	Mexico to Guatemala
Love-Lies-Bleeding	<i>Amaranthus caudatus</i> 'Love-Lies-Bleeding Red'	Amaranthaceae	Pantropical
Red Amaranth	<i>Amaranthus cruentus</i> 'Autumn's Touch'	Amaranthaceae	Mexico
Tampala	<i>Amaranthus tricolor</i>	Amaranthaceae	Pantropical
Garden Angelica	<i>Angelica archangelica</i>	Apiaceae	Northern Europe
Beet	<i>Beta vulgaris</i> 'Detroit Supreme'	Amaranthaceae	Europe to Middle East
Swiss Chard	<i>Beta vulgaris</i> subsp. <i>vulgaris</i> , <i>Cicla-Group</i>	Amaranthaceae	Eurasia
Kale	<i>Brassica oleracea</i> 'Black Magic'	Brassicaceae	Europe
Flowering Cabbage	<i>Brassica oleracea</i> 'Color-up Mix'	Brassicaceae	Europe
Pepper	<i>Capsicum annuum</i>	Solanaceae	Tropical America
Caper Bush	<i>Cleome hassleriana</i> 'Queen Mix'	Cleomaceae	Southern South America
Cilantro	<i>Coriandrum sativum</i>	Apiaceae	Southern Europe, N. Africa & SW. Asia
Cutleaf Cosmos	<i>Cosmos bipinnatus</i>	Asteraceae	Mexico
Yellow Cosmos	<i>Cosmos sulphureus</i>	Asteraceae	Mexico
Summer Squash	<i>Cucurbita pepo</i>	Cucurbitaceae	Se. North America
Carrot	<i>Daucus carota</i>	Apiaceae	Eurasia
Treasure flower	<i>Gazania rigens</i> 'New Day Strawberry Shortcake Mix'	Asteraceae	South Africa
Globe Amaranth	<i>Gomphrena globosa</i> 'Gnome mix'	Amaranthaceae	Brazil, Panama & Guatemala
Annual Baby's-Breath	<i>Gypsophila elegans</i>	Caryophyllaceae	Eurasia
Sunflower	<i>Helianthus annuus</i> 'Giganteus'	Asteraceae	Central North America
Beach Sunflower	<i>Helianthus debilis</i> 'Italian White'	Asteraceae	Eastern United States
Garden Balsam	<i>Impatiens balsamina</i>	Balsaminaceae	Southeast Asia & India
Morning Glory	<i>Ipomoea purpurea</i>	Convolvulaceae	Tropical America
Cardinal Climber	<i>Ipomoea x multifida</i>	Convolvulaceae	Hybrid Origin
Bunnytail	<i>Lagurus ovatus</i>	Poaceae	Southern Europe
Grass Pea	<i>Lathyrus sativus</i>	Fabaceae	Eurasia, America & Africa
Rose Mallow	<i>Lavatera trimestris</i>	Malvaceae	Mediterranean region
Chamomile	<i>Matricaria chamomilla</i>	Asteraceae	Eurasia
Fivespot	<i>Nemophila maculata</i>	Boraginaceae	California
Love-In-A-Mist	<i>Nigella damascena</i> 'Mulberry Rose'	Ranunculaceae	Eurasia & n. Africa

Annuals

Common Name	Latin Name	Family	Origin
Fennel Flower	<i>Nigella sativa</i>	<i>Ranunculaceae</i>	Southwest Asia
Basil	<i>Ocimum basilicum</i>	<i>Lamiaceae</i>	Asia & Africa
Pearl Millet	<i>Pennisetum glaucum</i> 'Purple Majesty'	<i>Poaceae</i>	Africa
Crimson fountaingrass	<i>Pennisetum setaceum</i>	<i>Poaceae</i>	East Africa, tropical Africa
Parsley	<i>Petroselinum crispum</i>	<i>Apiaceae</i>	Central Mediterranean region
Garden Petunia	<i>Petunia x hybrida</i> 'Celebrity Desert Sky Mix'	<i>Solanaceae</i>	Hybrid/Cultivar
Garden Petunia	<i>Petunia x hybrida</i> 'Celebrity Blue'	<i>Solanaceae</i>	Hybrid/Cultivar
Annual Phlox	<i>Phlox drummondii</i> '21st Century Magenta Mix'	<i>Polemoniaceae</i>	Texas
Rose Moss	<i>Portulaca grandiflora</i>	<i>Portulacaceae</i>	Brazil
Common Purslane	<i>Portulaca oleracea</i>	<i>Portulacaceae</i>	Northern Africa to Australia
Castor Bean	<i>Ricinus communis</i>	<i>Euphorbiaceae</i>	Northeastern Africa to Middle East
Mexican Marigold	<i>Tagetes erecta</i> 'Inca/Crackerjack'	<i>Asteraceae</i>	Mexico & C. America
French Marigold	<i>Tagetes patula</i>	<i>Asteraceae</i>	Mexico & Guatemala
Mexican Sunflower	<i>Tithonia rotundifolia</i>	<i>Asteraceae</i>	Mexico and C. America
Bluewings	<i>Torenia fournieri</i> 'Duchess Mix'	<i>Linderniaceae</i>	Vietnam
Garden Nasturtium	<i>Tropaeolum majus</i>	<i>Tropaeolaceae</i>	South America
Verbena	<i>Verbena hybrida</i> 'Tuscany Orchid Frost'	<i>Verbenaceae</i>	Hybrid/Cultivar
Corn	<i>Zea mays</i>	<i>Poaceae</i>	Tropical America
Narrow-Leaved Zinnia	<i>Zinnia angustifolia</i> (<i>haageana</i>) 'Crystal White'	<i>Asteraceae</i>	Mexico
Common Zinnia	<i>Zinnia elegans</i>	<i>Asteraceae</i>	Mexico
Zinnia	<i>Zinnia hybrida</i> 'Profusion Sunrise Mix'	<i>Asteraceae</i>	Hybrid/Cultivar

GARDEN ART

Susan Falkman's sculpture *Essence* is composed of *The Flower*, *The Fruit*, and *The Seed*, all manifestations of the life force. This series highlights and honors the 'trinity' of the plant kingdom. It is carved from limestone, a bedrock that supports and contributes to the creation of the soil, which in turn supports plant life.

Art funding was given by the Wisconsin Percent For Art Program.



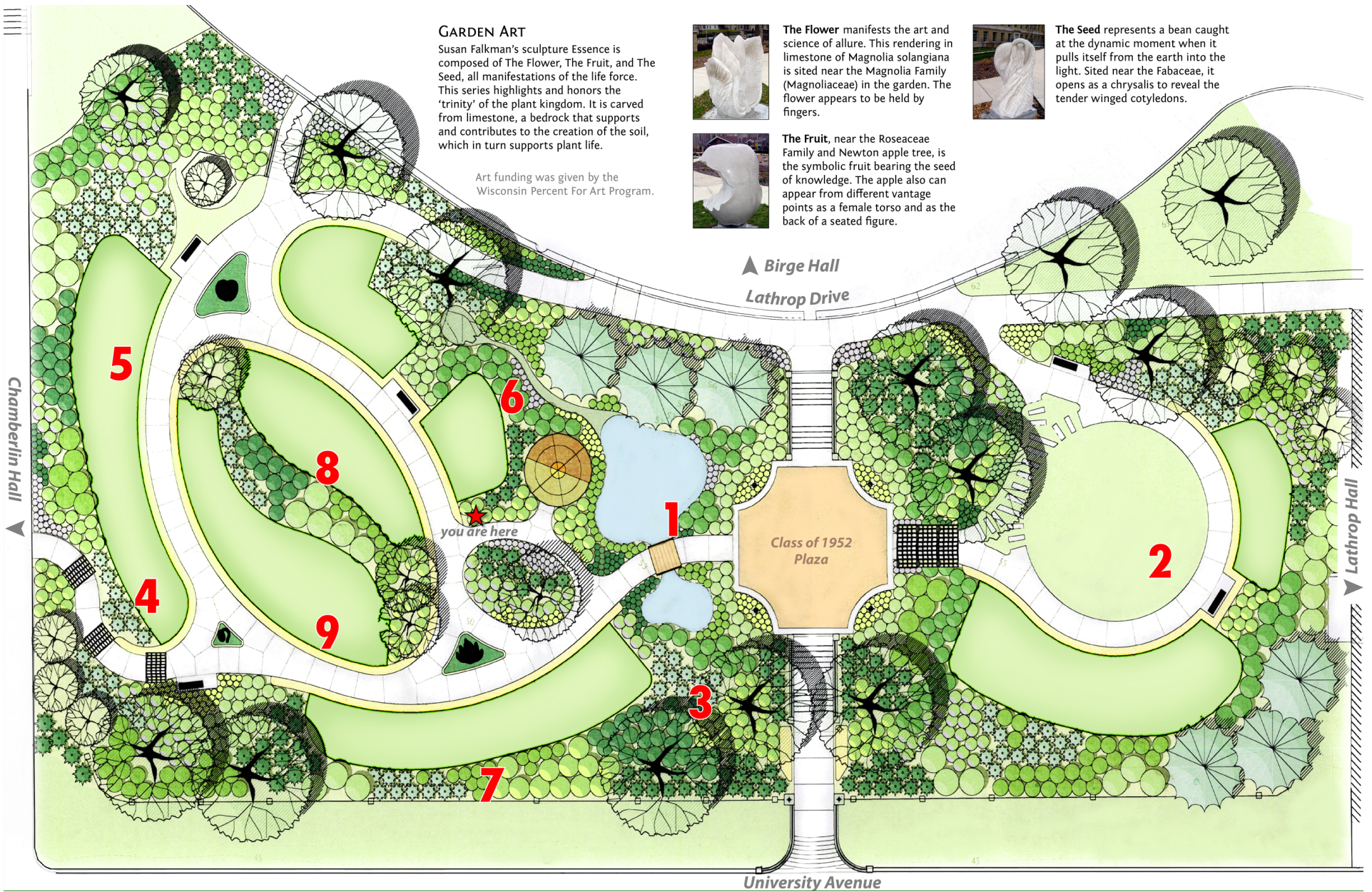
The Flower manifests the art and science of allure. This rendering in limestone of *Magnolia solangiana* is sited near the Magnolia Family (Magnoliaceae) in the garden. The flower appears to be held by fingers.



The Seed represents a bean caught at the dynamic moment when it pulls itself from the earth into the light. Sited near the Fabaceae, it opens as a chrysalis to reveal the tender winged cotyledons.



The Fruit, near the Roseaceae Family and Newton apple tree, is the symbolic fruit bearing the seed of knowledge. The apple also can appear from different vantage points as a female torso and as the back of a seated figure.



GARDEN PLANTING LAYOUT BY APGIII ORDERS

ANGIOSPERM PHYLOGENY GROUP SYSTEM OF CLASSIFICATION

The UW-Madison Botanical Garden is the first garden in the world to be based on the new Angiosperm Phylogeny Group (APGIII) system of molecular classification of plants.

